

SAT 9-10 AM

SongFarmer Chapter Jam

What Do You Play When You Don't Know the Tune? Some tips and tricks for SongFarmers when they don't know the song in the jam. With the SongFarmers of Lexington.

Beginning Banjo with Rik Palieri (Office D)

If you are just starting out here is the workshop for you. We will talk about the basics; tuning simple chords and some right hand styles to get off on the right foot.

More than a Hobby (Office A)

For SongFarmers that might be interested in taking their music to the next level and beyond, what does it take to go from front porch to the stage? From making recordings, to songwriting, musicianship and marketing, get insight into planning a future including you as a touring performer!

SAT 10:15 to 11:15 AM

Successful Chapters: How to Run a Song Circle
Main Theater ... This will be a brain storming collaboration about how to run your chapter and keep the circle moving along and fun!

Fiddle with Ron Pen Workshop I (Office A)
Intermediate-level fiddlers will be treated to a session devoted to learning several intriguing tunes which will be intertwined with stories that connect the music to life under the shadow of Pine Mountain.

Jamming with Ukuleles!

SongFarmer Chapter Jam
Ukulele jam San Francisco SongFarmer Erich Sylvester.

Explore Songwriting Workshop II (Office D)

Explore the craft songwriting with SongFarmers' Sanford Heath and Richard Biar.

Bring your instrument and a lawn chair, join any jam/circle you want. Learn, play, sing and be part of the community building a "front porch around the World!" Have you seen the national TV broadcast of the SongFarmers film? Thank you to our partners for making this film possible. And thank you to Berea College for being such a wonderful host for the 2019 National Gathering of SongFarmers!



SAT 11:30-12pm

Classroom Project Office C

Introducing the Woodsongs Classroom Project. The goal of this project is to encourage love and passion for the arts. This is free to all schools and home school families.

1:15-2:30 PM

"Sacred Harp Singing"

with Ron Pen Workshop I (Office D)

Musical and social harmony through the recreation of a rural 19th-century singing from the Sacred Harp tune book, written in a unique four-shape notation of triangles, squares, circles, and diamonds makes learning to read music easy and enjoyable. The workshop will accommodate beginners and veteran singers. Books will be available to borrow.

Dulcimer Jam!

Workshop II (Office A)

Join for all levels of the mountain dulcimer! Music provided or bring a song to share with the group. With Sue Peterson Blyth.

"SongFarmers: The Next Generation"

A jam led by SongFarmer youth from various chapters (SongFarmer Choice/Old Time jam tent).

SongFarmer Tools: Technology Seminar

Main Theater

"Technology Seminar on Live Streaming, Animated Videos, and How to Make Videos of Your Gathering"

Incorporate technology into your SongFarmer Chapter meetings to increase your visibility and presence on social media. We will cover the basics of Sony Movie Studio software, learn how to create background scenes, and uploading to apps, including Facebook or Youtube.

SAT 2:45-4pm

SongFarmer Documentary Film

Main Theater

As seen on national TV. Watch the complete film about the creation and purpose of the SongFarmers community, followed by Q&A with folksinger Michael Johnathon

SAT 4-5:15 PM

"SongFarmer's Town Hall"

Main Theater

All SongFarmer's voices are center stage during our annual Town Hall Meeting. Don't miss the chance to be part of shaping the SongFarmer community for the future. Case in point - a participant in the inaugural town hall suggested the idea of having chapters - and now there are over 60 from Hawaii to Vermont! Your feedback, ideas and suggestions are encouraged.

5PM-6:30PM BLUEGRASS & BEANS Dinner Hour

Bluegrass music and home cooked beans and cornbread! Donations suggested per meal.

6:30-9:00 PM

SongFarmer Concert FREE TO THE PUBLIC

Musicians who wish to participate may sign up with the concert coordinator and will be assigned a place on the evening's schedule. Each participant is strictly limited to two songs of a total duration of no longer than five minutes.

Plus non-stop Jam Circles



The WoodSongs
Front Porch Association
presents the 5th annual

Gathering of SongFarmers

BEREA ARENA THEATRE 1835 Big Hill Rd, Berea, KY 40403

Saturday, Oct 19, 2019

Join a Jam - non-stop playing all weekend!

Bluegrass Jams are coordinated by
Skip & Linda Johns, Jim Talbert & Cassandra Adams

Slow Jams are coordinated by
Perry and Diana Brake

SongFarmer Chapter Jams are
coordinated by Bryan Klausing

Old Time Jams are coordinated
by Ron Pen

All workshops and song jams
are FREE to WFPA members



*Join us for the big Bluegrass & Beans Dinner and
a FREE evening Concert by the best front porch
pickers from across the nation!*



Workshop Leader BIO's

Cassandra Adams (SongFarmer Chapter Leader, South Bend, AR) has a BA degree in Psychology from Saint Leo University in Saint Leo Florida. She is the Community Job Development Coordinator for Pathfinder, Inc., a non-profit organization in Jacksonville, AR. Cassandra was instrumental in forming the “Join the Jam” program at the Cabot Library. Cassandra also writes the **SongFarmers Cultivator Newsletter**. For the past 5 years, Cassandra has been the assistant coordinator for the Friends and Family Bluegrass Jam festival in Little Rock. Cassandra studied under Jim Talbert, plays rhythm guitar and is now in the process of learning the U-Bass. Cassandra helped form the SongFarmers of Cabot, Arkansas chapter and also works closely with the library in their music programs on and off site.

Richard Biar is a Singer/Songwriter and Chapter Leader of SongFarmers of Kalamazoo, MI.

Sue Peterson Blyth is a music lover from Berea, Kentucky. She headed up the SongFarmers of Madison County for awhile.

Perry and Diana Brake (Song Farmer Chapter Leaders, Tellico Plains, GA) are multi-instrumentalists and music instructors from Tellico Plains, Tennessee. They have been actively hosting and attending local Jam sessions weekly for the last twenty years in North Central Florida and Southeast Tennessee. Perry and Diana began the Tellico Plains chapter of SongFarmers in the early Spring of 2016. Perry is a Certified Pete Wernick Bluegrass Jam Instructor and is also the Director of the Tellico Plains Junior Appalachian Musicians (JAM) Chapter. Diana and Perry also perform as the duo Faith Willin'.

Josh Dunson (Chair of the SongFarmer Creative Board), a community organizer by trade, ran the roots folk music agency Real People's Music for 40 years. He closed RPM in 2015 after changes in the college market and the music business became largely digitalized. He also wrote as a critic for Broadside(NY), Sing Out! and Chicago Magazine. Josh chairs the SongFarmers Creative Board.

Kari Estrin (SongFarmer Creative Board) Kari's expertise ranges from artist/tour management to acoustic music radio promotion and concert, festival and event production. Her groundbreaking Artist Career Consulting pre-dates coaching by more than a decade. Kari works with artists to take a holistic and integrative, yet strategic approach to their career planning. In addition to her success as a radio promoter, Kari is also known for her unique skill in working with artists to take their new releases from concept to promotion. Her accomplishments are many - she celebrates 50 years in music in 2021! For more info:<http://www.kariestrin.com>

Stacey Farris is the SongFarmers Chapter Leader for London, KY

Sanford Heath is Singer/SongWriter from the Dallas/Fort Worth Texas area.

Skip Johns (SongFarmer Chapter Leader, Suwannee River Valley, FL) is a Florida State University graduate, an instructor in guitar, banjo and double bass with expertise in classical guitar, Merle Travis and Chet Atkins fingerstyle guitar and the five-string banjo. His programs include presentations for the Smithsonian's Museum on Main Street, the Florida Humanities Council, the Florida Department of State, and Florida Governor's Office. He is a veteran of the Florida Folk Festival, has opened concerts for Johnny Cash, Al Hirt, Bill Monroe, Ralph Stanley, Grandpa Jones, Tony Trischka, The Dirt Band, Seldom Scene and performed on the WSM Grand Ole Opry.

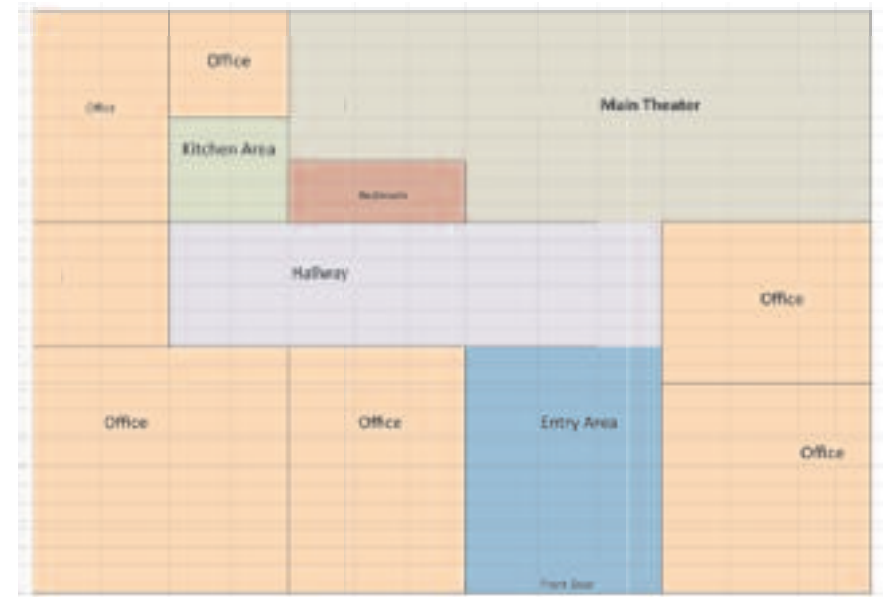
Linda Dyal Johns (SongFarmer Chapter Leader, Live Oak, FL) is a graduate of Florida State University with a Bachelor of Arts degree in English and a Master of Social Work degree. She is a retired senior management and policy analyst with the State of Florida, a former instructor at Florida State University and applies her 35 years of experience in management, government, public affairs and the use of media and other resources to supporting and promoting the SongFarmers community. Linda and husband, Skip, host two SongFarmers chapters in Florida, and have supported the formation of four additional chapters in Florida and Georgia.

Bryan Klausing is the Chapter Leader for SongFarmers of Lexington. He's on the WFPA Creative Board and a producer of the WoodSongs Old-Time Radio Hour.

Isaac May plays mandolin in the acoustic roots band HillHouse. He's also technical Director of the WoodSongs Old-Time Radio Hour.

Ellen Mershon is a Songfarmer Chapter and chapter leader of of North East Cincinnati, OH.

Erich Sylvester member of SongFarmers from SF who specializes in Classic hapa haole Hawaiian swing songs from the era before WW2 on the ukulele.



Rik Palieri (SongFarmer Chapter Leader, Hinesburg VT) is a talented singer, songwriter, multi instrumentalist, and storyteller and leader of The Hinesburg, VT chapter of SongFarmers, Utah Phillips describes Rik Palieri this way: “You take all the best of who we’ve become, we Americans; our plain, honest voice, our wandering soul, the deep, true poetry of all our places, trust, honor, hard-working hands and hearts at peace. Take all of these, stitch them together with our people’s common music, the ring of the banjo and happy feet stomping away the darkness – and somewhere in the middle of all this you’ll find Rik. He has more time and miles on him than a prospector’s mule. But he has turned up the gold. It shines from a thousand stages where, night after night he gives back to some of us what he’s learned from the rest of us...”

Ron Pen (Member of the Creative Board) is a performer and scholar of the music of the Appalachian region. A founding member of the Appalachian Association of Sacred Harp Singers, with whom he performed on A Prairie Home Companion, Ron is now Professor and Director Emeritus of the John Jacob Niles Center for American Music at the University of Kentucky. He began fiddling forty-five years ago in Rockbridge County, VA and has since participated in various concerts, workshops, and festivals across the region. He has also performed music across the globe with the Red State Ramblers and recently shared shape note singing with Sufi chant in Lancashire, England.

Jim Talbert (Song Farmer Chapter Leader of Cabot, AR) has been playing bluegrass music for over 30 years, performing regularly as a banjo and guitar player with several bluegrass bands including Borderline Bluegrass and Hickory Hill Gospel Bluegrass. Jim has a BA in Music Education and created the “Join the Jam” program at his hometown public library, helping beginner and intermediate students gain the knowledge and confidence to play with other musicians in a jam. Jim formed the SongFarmers of Cabot, Arkansas Chapter approximately two years ago and works closely with the Library on their music programs.

SongFarmers.org